

CYBER SECURITY KEYPOINTS

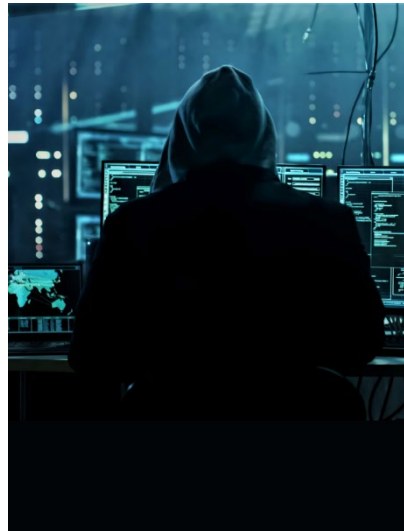
January

From the County
Network Security
Cooperative



What to Know About ARTIFICIAL INTELLIGENCE

AI is lauded for enhancing efficiency, customer service, cost savings, threat detection, fraud detection, risk assessment, investment management, regulatory compliance, etc. However, it's important to be conscientious of best practices.



Understand Privacy Settings

On AI platforms, take the time to review what data is collected and how it's used. Then adjust privacy settings to your comfort level.

Don't Overshare

Keep in mind that what you share could be stored or used to improve AI responses, so never enter personal, proprietary, or sensitive information. However, paid AI services generally offer better data privacy than free services, so do your homework on how user data is collected, stored, and used with every option.

Distinguish the Official from the Artificial

At present, certain markers and indicators can help us recognize AI-generated content (whether that be text/email, audio, video, etc.), but as it continually advances, it may become more difficult to distinguish AI from reality. That means phishing emails, calls, and other scams could become harder and harder to spot. Stay aware and think critically.



Think Critically

Remember that these systems can make mistakes. AI can provide accurate information, but don't blindly trust. Fact-check, cross-reference with credible sources, and engage your mind before accepting AI-generated outputs as fact.

Stay Informed

Stay abreast of the latest advancements and developments in AI in order to better understand its capabilities, limitations, and potential risks. This will empower you to make informed and responsible choices.

The County Network Security Cooperative is a collaboration of partners including:



- AND -



Disclaimer: This document reflects current guidance and is subject to change due to the evolving cyber security environment.